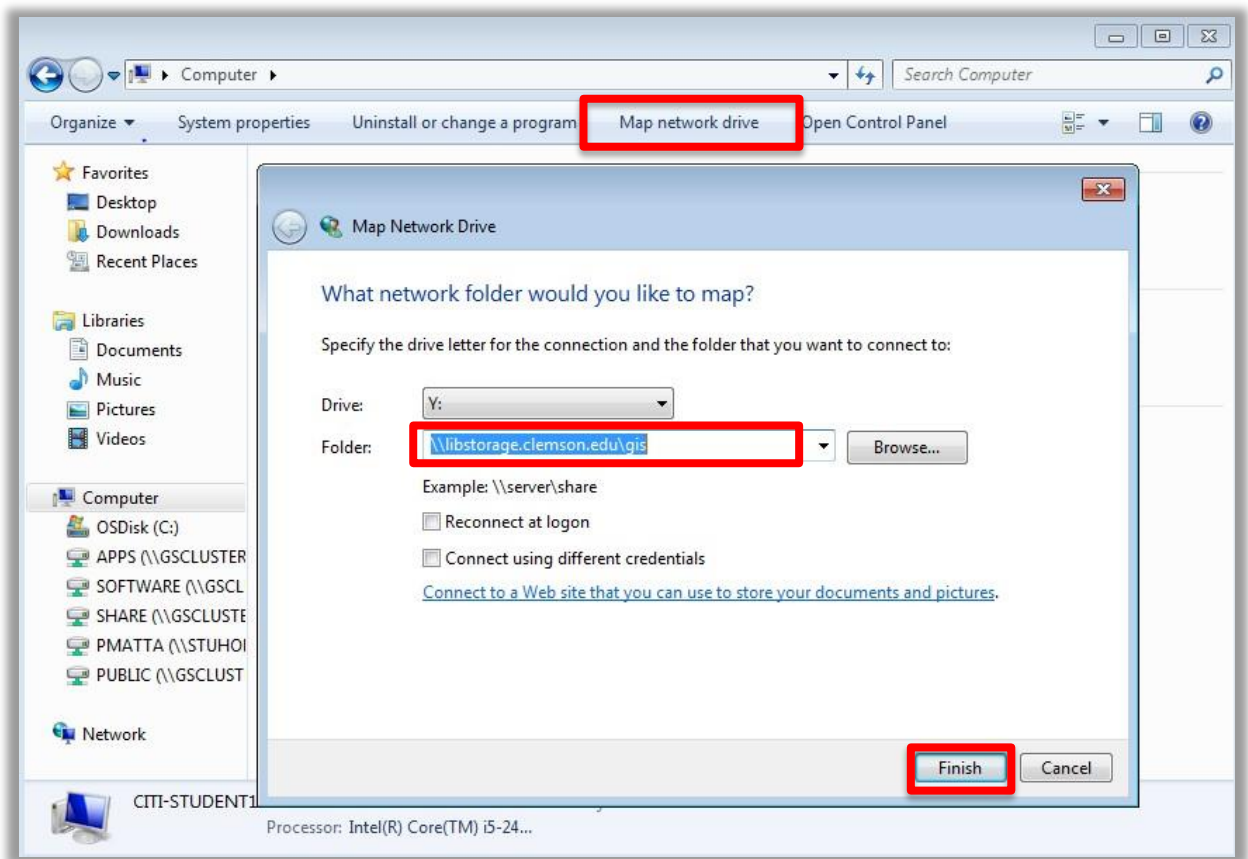
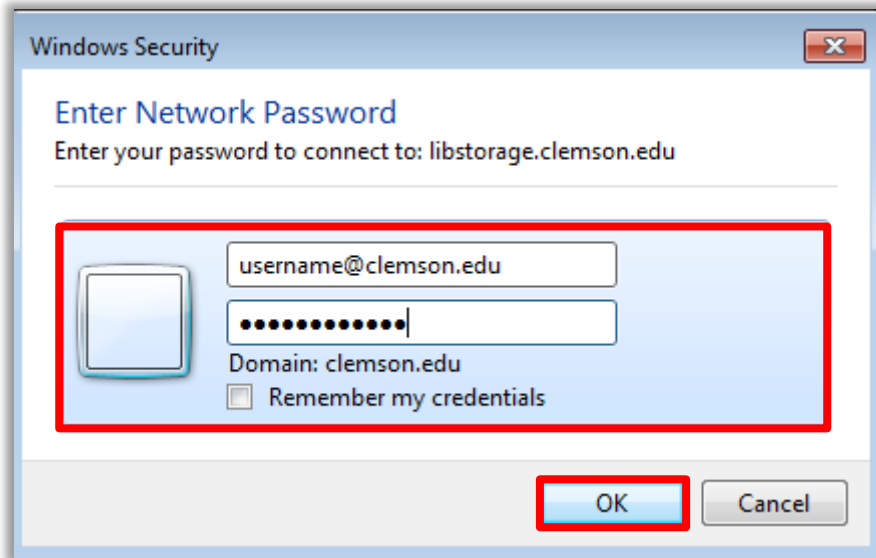


## HOW TO CONNECT TO LIBSTORAGE DRIVE

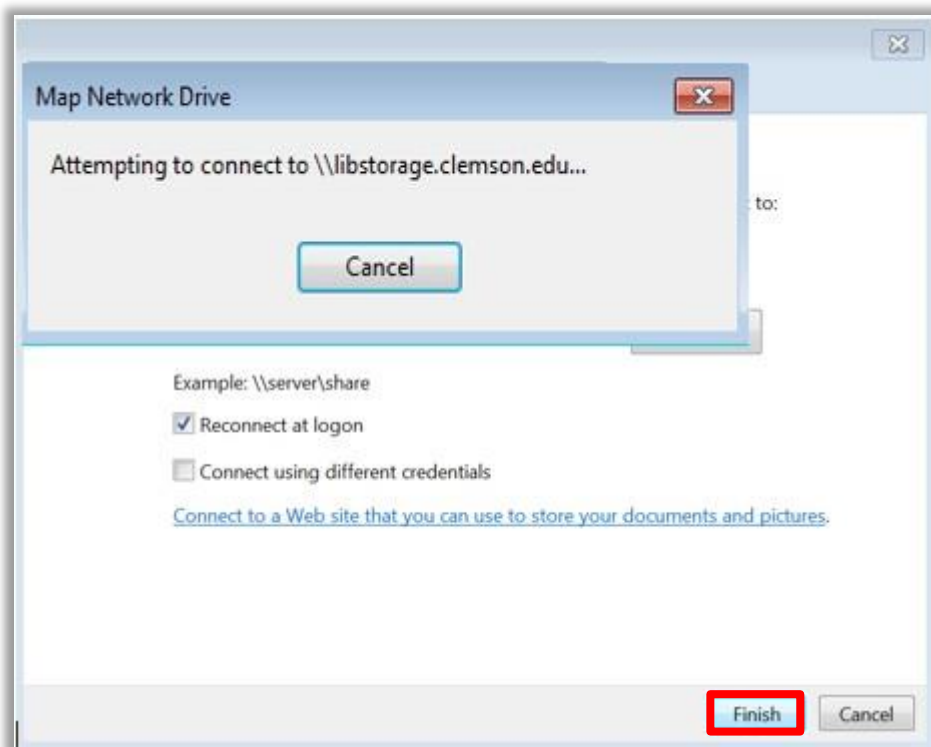
- In order to get the data from the libstorage drive, you need to be connected to the campus network.
- Once you are connected to EDUroam, open your file explorer and click on computer in the menu on the left.
- After clicking on computer, click [Map Network Drive](#).
- In the blank space that says folder to the left of it, type `\\libstorage.clemson.edu\gis`. The letter chosen in the Drive dropdown menu is arbitrary.
- Click [Finish](#).



- You will be prompted to enter a password. In the [Enter Network Password](#) dialogue box, enter your Clemson userID and password.
- Click [OK](#).



- Click [Finish](#).
- You will be prompted to enter a password. In the [Enter Network Password](#) dialogue box, enter your Clemson userID and password.



- After connecting to the network drive, it should display in your computer window next to your (C:) Drive. It will be labeled [\\libstorage.clemson.edu\gis](#). Double-click to open the drive.